

Title:
ComputernameValidator

Overview and Guide

History

Version	State/Change	Date	Author
1.0	First release	08/04/2020	Jochen Schmitt, Simon Ditter
1.1	Fixes including text and images	11/8/2020	Jochen Schmitt
1.2	Rename of the package. Update to this document.	15/02/2021	Jochen Schmitt

1 Table of content

2	Introduction.....	4
3	Installation.....	4
4	Import of PreOS-Packages.....	4
4.1	Sequence and dependencies.....	6
5	Assignment.....	6
6	Output.....	6
6.1	Management Console.....	6
6.2	Client.....	6
7	Configuration options.....	7
8	Logs.....	8
8.1	Example PXE-Log.....	8
8.2	Example Filesystem.....	8
9	History of HardwareProfileValidator.....	8

2 Introduction

The PreOS package 'ComputernameValidator' ensures that a Windows installation via the Empirum WinPE extension continues, only if the computer name corresponds to various requirements of the administrator. This ensures that only computers with defined name specifications get into the hands of the user.

Here is a longer description of the process:

During the unattended Windows installation, using Matrix42 Empirum WinPE, the PreOS package ,ComputernameValidator' validates the computer name. The validation specifications are defined as variables in the Management Console.

The computername is validated according,

- a specified beginning
- a maximum length
- defined characters that should not appear in the computer name

If the computer name does not meet the defined requirements, the operating system installation is aborted. There is no Windows installation as long as the computer name does not meet the requirements.

3 Installation

The included ZIP file contains an Empirum structure like the Empirum WinPE AddOn. This Empirum structure must be copied in the existing Empirum structure on the EmpirumServer. This places the WinPE package in the PackageStore folder and is ready to get imported.

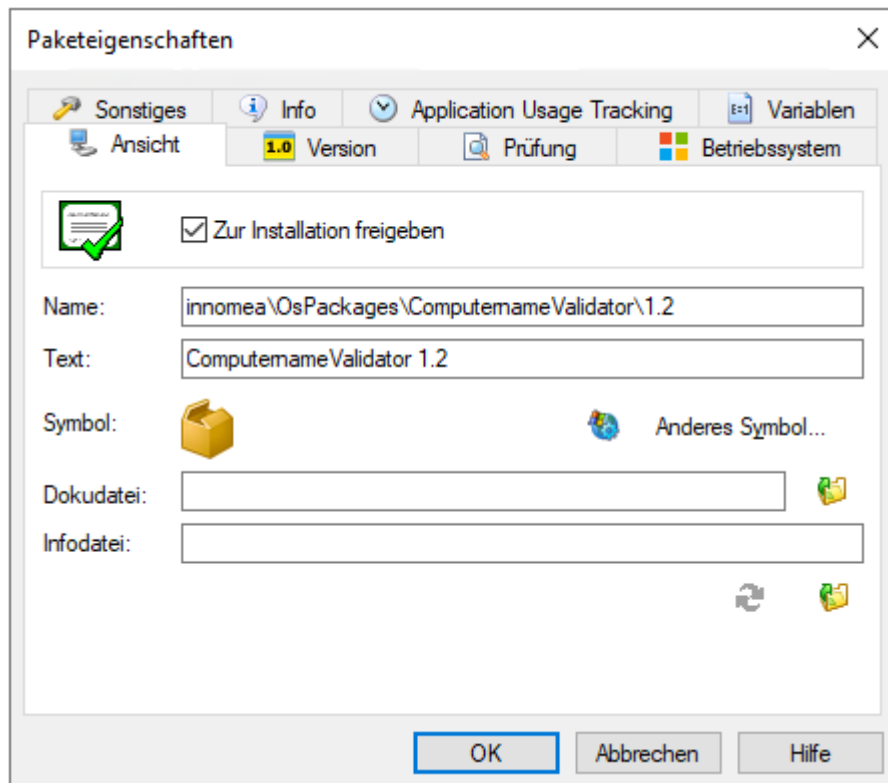
4 Import of PreOS-Packages

With the previous steps you prepared the package files for the import process to the Empirum structure and database. In addition, you must import the package using the Management Console to be prepared for distribution. If this topic is new for you, you can grab helpful instructions from the [Step by step Guide](https://help.matrix42.com) on help.matrix42.com.

During the Import Wizard choose "ComputernameValidator" from the list and activate this package for distribution. The two following figures show what is important during and after the import. Please note that the available version may be higher than the one shown here.



1 – Selection window from the Import Wizard (preferably use 'select none' before proceeding)

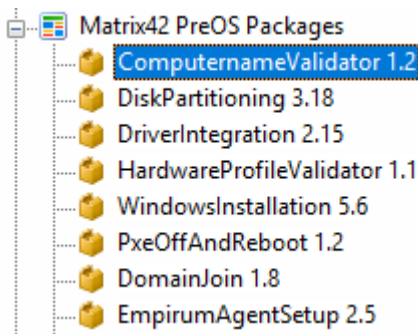


2 -Package properties: 'Ready to install'

4.1 Sequence and dependencies

Because the arrangement of the WinPE packages is affecting the installation sequence, you must arrange them in the right order. This package has to be arranged at the very start.

The following figure shows where the "ComputernameValidator 1.x" package must be inserted. Please note that the available version may be higher than the one shown here.



5 Assignment

Now you need to assign the package to a configuration- or assignment groups in which the OS installation will be done using WinPE.

6 Output

6.1 Management Console

If the validation fails, no other PreOS-Packages will be executed and the installation stops for two hours. The error messages will be shown in the Management Console under 'Show log ...', 'SWDepot-Log' and more detailed in 'PXE-Log'.

Example SWDepot-Log entries:

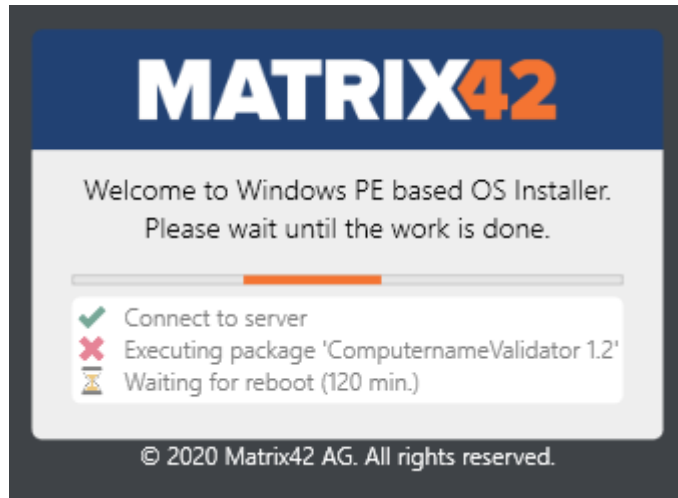
Paket	Version	R...	Modus	Ergebnis	Meldung
ComputernameValidator 1.2	1.2	0	Install	Failure	ErrorMessage : Computername wpmVM005 does not begin with an allowed prefix. Abort!

Paket	Version	R...	Modus	Ergebnis	Meldung
ComputernameValidator 1.2	1.2	0	Install	Failure	ErrorMessage : [ComputernameValidator] Computername DellE7240 is longer than 8 characters. Abort!

```
[PEAgent] [WinPE] PreOS Package execution failure. Rebooting client in 7200 seconds.
[PEAgent] [WinPE] [ComputernameValidator] Computername DellE7240 is longer than 8 characters. Abort!
[PEAgent] [WinPE] [ComputernameValidator] AllowedComputernamePrefix = PC NB VM - MaxComputernameLength = 8 - UnwantedChars = - _
[PEAgent] [WinPE] [ComputernameValidator] IgnoreComputernameValidation:0
[PEAgent] [WinPE] Start to execute innomea\OsPackages\ComputernameValidator\1.2 package.
```

6.2 Client

At the client, the failed validation will be shown like this:



7 Configuration options

The basic idea of the PreOS package ComputernameValidator is that a Windows installation via Empirum WinPE extension is only continued if the computer name corresponds to various specifications of the administrator.

Variable	Wert	Kontrollelement	Beschreibung
CLIENT_OPTIMIZATION_SETTINGS			
SUBDEPOT_PXESERVICE_CONFIG			
ComputernameValidator			
EmpirumAgentSetup			
HardwareProfileValidator			
DriverIntegration			
IgnoreComputernameValidation	1	Zahl	[0 1] - 0 (default) The computername will be validated. Set the value to 1 to skip the validation.
ComputernamePrefix	PC NB VM	Text	The Computername will be validated to one or more prefixes. Separate the prefixes with a whitespace/blank.
MaxComputernameLength	8	Zahl	The Computername will be validated to a maximum number of characters.
UnwantedChars	-	Text	The Computername will be validated to one or more unwanted characters. Separate the unwanted characters with a whitespace.

Variable		
IgnoreComputernameValidation	Number	0 – the Computername will be validated (Standard). 1 – the validation will be skipped
ComputernamePrefix	Text	Beginning of the Computernamen. Multiple prefix can be entered separated by an whitespace (blank). Be careful the entered prefix is treatend case sensitive. Example: PC NB TA
MaxComputernameLength	Number	Defines the maximum length of the computername. Example: 8
UnwantedChars	Text	Define characters that should not appear in the computername. Multiple characters can be entered separated by an whitespace (blank). Example: _ -

8 Logs

ComputernameValidator uses also the settings of the WinPE installation to create a logfile which can be found in \\%EmpirumServer%\EmpInst\$\Wizard\OS\WinPeStatus\%DomainName%_%ComputerName% and is named 'innomea_ ComputernameValidator.log'.

8.1 Example PXE-Log

```
xx.12.2020 09:49:18 [PEAgent] [WinPE] Finished execution of
innomea\OsPackages\ComputernameValidator\1.2 package.
```

```
xx.12.2020 09:49:18 [PEAgent] [WinPE] [ComputernameValidator] Computername: PC005 was
successfully validated!
```

```
xx.12.2020 09:49:18 [PEAgent] [WinPE] [ComputernameValidator] AllowedComputernamePrefix =
PC - MaxComputernameLength = 8 - UnwantedChars = _ -
```

```
xx.12.2020 09:49:18 [PEAgent] [WinPE] [ComputernameValidator]
IgnoreComputernameValidation:0
```

```
xx.12.2020 09:49:18 [PEAgent] [WinPE] Start to execute
innomea\OsPackages\ComputernameValidator\1.1 package.
```

8.2 Example Filesystem

innomea_ ComputernameValidator.log

```
[ComputernameValidatorname] IgnoreComputernameValidation:0
[ComputernameValidatorname] AllowedComputernamePrefix = PC - MaxComputernameLength = 8 -
UnwantedChars = _ -
[ComputernameValidatorname] Computername: PC005 was successfully validated!
```

Fehler:

```
[ComputernameValidatorname] IgnoreComputernameValidation:0
[ComputernameValidatorname] AllowedComputernamePrefix = PC - MaxComputernameLength = 8 -
UnwantedChars = _ -
[ComputernameValidatorname] Computername wpmVM005 does not begin with an allowed prefix.
Abort!
```

9 History of ComputernameValidator

Version	Comment
1.0	Initial Release
1.1	Modifications regarding reboot and messages
1.2	Rename and small modifications